



# ASTRA

## MODULAR DISPLAYS



## Add-Ons MODULAR HARD CASES

### Modular Hard Case

Item #	Description	1	2-5	6-11	12-24
220397	Hard Case with Two Wheels	395.00	387.00	375.25	367.25
220398	Hard Case with Four Wheels	545.00	534.00	518.00	507.00
USD MSRP (C)					

Hardware Lead Time: Ships same day when ordered before 2 p.m. Central



Hard case with  
four wheels



Hard case with  
two wheels

Prices are subject to change; visit [showdowndisplays.com](http://showdowndisplays.com) for the most current pricing.  
Setup fee: \$20.00(G); no setup fee on orders placed via our website. View current graphic templates, assembly videos and instructions on our website.

[SHOWDOWNDISPLAYS.COM](http://SHOWDOWNDISPLAYS.COM)



## ASTRA MODULAR DISPLAY SYSTEM

Innovative, lightweight, and customizable display solution designed to captivate audiences with its seamless integration of LED lighting.

- Modular design allows you to expand and modify into various configurations
- Combine with other Astra components to craft a highly adaptable and visually striking display (sold separately)
- Integrated LED lights on top and bottom provide edge-to-edge illumination
- Black PVC frame offers a sophisticated look while ensuring durability
- 4.75" frame depth
- Artwork is dye sublimated on backlit woven polyester
- SEG for easy graphic panel installation
- Includes two graphic panels for a double-sided display
- Includes a soft case with protective hard foam lining
- Each product plugs into any standard USA outlet
- Tool-free assembly
- UL listed



Lightweight and portable snap-fit interlocking frame sets up in minutes.

### Astra Modular Connectors



**45° Connector Set**  
Connect two Astra walls at a 45° angle.



**90° Connector Set**  
Connect two Astra walls at a 90° angle.



**180° Connector Set**  
Connect two Astra walls at a 180° angle.



**T & Bridge Connector Set**  
Install overhead Astra wall horizontally across the top of your Astra displays or connect three Astra walls in a T shape.

### Add-Ons



**Hanger Clip**  
Hang merch off your Astra frame.



**Literature Holder**  
Hang to display literature.  
Pocket size:  
9.25"W x 14"H x 1.25"D

Prices are subject to change; visit [showdowndisplays.com](http://showdowndisplays.com) for the most current pricing.

Setup fee: **\$20.00(G)**; no setup fee on orders placed via our website. View current graphic templates, assembly videos and instructions on our website.

[SHOWDOWNDISPLAYS.COM](http://SHOWDOWNDISPLAYS.COM)

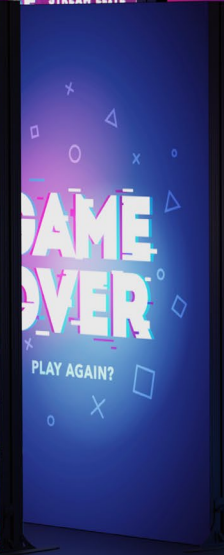
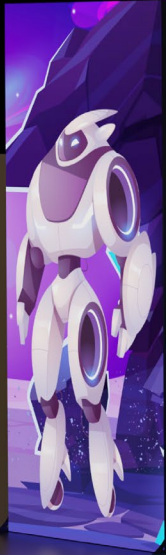
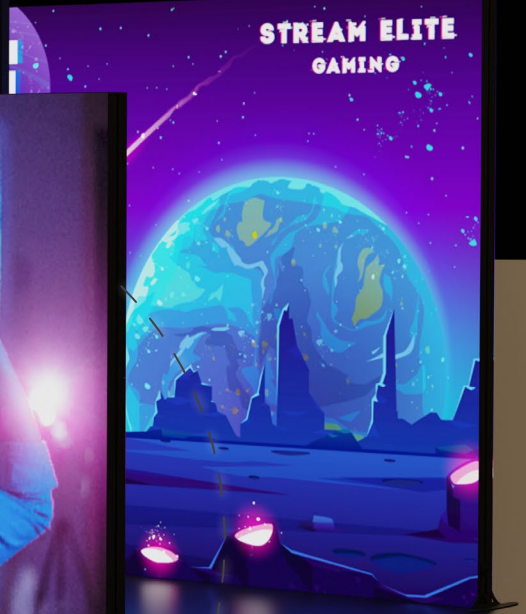


3'W x 8'H

5'W x 8'H

8'W x 8'H

10'W x 8'H



3'W x 6.5'H

5'W x 6.5'H

8'W x 6.5'H

10'W x 6.5'H

## 6.5'H Astra Wall

Item #	Description	1	2-5	6-11	12-24
255300	3'W Kit	1128.00	1082.00	1037.00	981.00
255303	5'W Kit	1788.00	1716.00	1645.00	1555.00
255306	8'W Kit	2915.00	2798.00	2682.00	2536.00
255309	10'W Kit	3289.00	3157.00	3026.00	2861.00
3' & 5'W Kit Includes: Hardware, 2 Graphic Panels and Soft Carry Case		USD MSRP (C)			
8' & 10'W Kit Includes: Hardware, 2 Graphic Panels and Soft Carry Case with Wheels					

Description	Product Size	Product Wt.	Media
3'W	37"W x 78.75"H x 15.75"D	28.2 lbs.	backlit woven polyester
5'W	61"W x 78.75"H x 19.625"D	39.6 lbs.	backlit woven polyester
8'W	97"W x 78.75"H x 19.625"D	50 lbs.	backlit woven polyester
10'W	119"W x 78.75"H x 19.625"D	56.8 lbs.	backlit woven polyester

## 8'H Astra Wall

Item #	Description	1	2-5	6-11	12-24
255312	3'W Kit	1210.00	1162.00	1113.00	1053.00
255314	5'W Kit	1898.00	1822.00	1746.00	1651.00
255316	8'W Kit	3053.00	2930.00	2808.00	2656.00
255318	10'W Kit	3454.00	3316.00	3178.00	3005.00
3' & 5'W Kit Includes: Hardware, 2 Graphic Panels and Soft Carry Case		USD MSRP (C)			
8' & 10'W Kit Includes: Hardware, 2 Graphic Panels and Soft Carry Case with Wheels					

Description	Product Size	Product Wt.	Media
3'W	37"W x 96"H x 15.75"D	28.6 lbs.	backlit woven polyester
5'W	61"W x 96"H x 19.625"D	40.4 lbs.	backlit woven polyester
8'W	97"W x 96"H x 19.625"D	51.3 lbs.	backlit woven polyester
10'W	119"W x 96"H x 19.625"D	58.4 lbs.	backlit woven polyester

Production Lead Time: 4 days from final proof approval



Hardware can be assembled to be 6.5'H or 8'H. Replacement graphics are available online.

## Astra Connector Sets

Item #	Description	1	2-5	6-11	12-24
255350	45° Connector Set	49.50	47.52	45.54	43.07
255351	90° Connector Set	49.50	47.52	45.54	43.07
255352	180° Connector Set	22.00	21.12	20.24	19.14
255353	T Connector	22.00	21.12	20.24	19.14
255354	Bridge Connector Set	165.00	158.40	151.80	143.60
USD MSRP (C)					

## Astra Hanger Clip

Item #	Description	1	2-5	6-11	12-24
255355	Hanger Clip	22.00	21.12	20.24	19.14
USD MSRP (C)					

## Astra Stabilizing Feet

Item #	Description	1	2-5	6-11	12-24
255362	Stabilizing Feet (Set of 2)	77.00	73.90	70.85	67.00
USD MSRP (C)					

## Astra Literature Holder

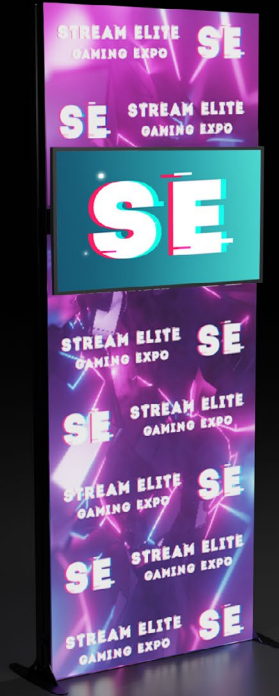
Item #	Description	1	2-5	6-11	12-24
255360	Kit	55.00	52.80	50.60	47.85
Kit Includes: Literature Holder and Literature Holder Hanging Clip		USD MSRP (C)			

Hardware Lead Time: Ships same day when ordered before 2 p.m. Central

Prices are subject to change; visit [showdowndisplays.com](http://showdowndisplays.com) for the most current pricing.  
Setup fee: \$20.00(G); no setup fee on orders placed via our website. View current graphic templates, assembly videos and instructions on our website.

SHOWDOWNDISPLAYS.COM

# build engagement WITH THESE DISPLAYS

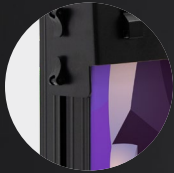


## Astra Monitor Mount

Item #	Description	Product Wt.	1	2-5	6-11	12-24
255330	Kit	11.8 lbs.	269.50	258.75	247.90	234.50

Kit Includes: Mounting Hardware, 2 Stabilizer Feet and Soft Carry Case  
Compatible with 3"W Astra Wall (sold separately).  
Max monitor size of 50" or 18 lbs. (monitor not included).

Hardware Lead Time: Ships same day when ordered before 2 p.m. Central



Monitor cord can be threaded through the channel on the frame to limit visibility.



Max monitor size of 50" (monitor not included).



Countertop supports up to 20 lbs.

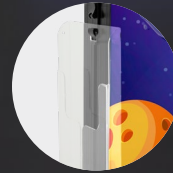
## Astra Counter

Item #	Description	1	2-5	6-11	12-24
255390	Kit	1034.00	992.50	951.50	899.50

Kit Includes: Hardware, 2 Graphic Panels and Soft Carry Case  
USD MSRP (C)

Product Size	Product Wt.	Media
43.75"W x 40.25"H x 15.75"D	30.4 lbs.	backlit woven polyester

Production Lead Time: 4 days from final proof approval



Add the Astra Literature Holder to the side of your counter to keep counter space open (sold separately).





10'W x 8'H



create your own

## POINT OF PURCHASE

### Astra Shelves

Item #	Description	Product Wt.	1	2-5	6-11	12-24
255340	Single Shelf Kit	9.8 lbs.	214.50	205.90	197.30	186.60
255341	Double Shelf Kit	15.2 lbs.	302.50	290.50	278.25	263.25

Single Kit Includes: Shelf, 2 Shelf Brackets, 2 Stabilizer Feet and Soft Carry Case  
Double Kit Includes: 2 Shelves, 2 Shelf Brackets, 2 Stabilizer Feet and Soft Carry Case  
Compatible with 3'W Astra Wall (sold separately).

USD MSRP (C)

Shelves support up to 15 lbs. Shelf size 36.75"W x 8.75"D.

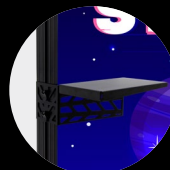
### Astra Side Shelf

Item #	Description	Product Wt.	1	2-5	6-11	12-24
255342	Kit	7 lbs.	132.00	126.70	121.40	114.80

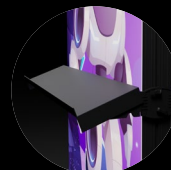
Kit Includes: Shelf, Bracket and Soft Carry Case  
Shelf supports up to 10 lbs. Shelf size 12.25"W x 8.625"D.

USD MSRP (C)

Hardware Lead Time: Ships same day when ordered before 2 p.m. Central



Side shelf can be displayed on the left or right side of any size wall and at any height.



Single and double shelves can be attached at any height on a 3'W wall and displayed flat or at a 20° angle.

Prices are subject to change; visit [showdowndisplays.com](http://showdowndisplays.com) for the most current pricing.  
Setup fee: \$20.00(G); no setup fee on orders placed via our website. View current graphic templates, assembly videos and instructions on our website.

SHOWDOWNDISPLAYS.COM



### Astra Modular Booth Kit 1

Item #	Description	1	2-5	6-11	12-24
255530	6.5'H Kit	6585.00	6410.00	6025.00	5810.00
255532	8'H Kit	6905.00	6725.00	6320.00	6095.00

Kit Includes: Hardware, 8 Graphic Panels, 2 - 90° Connector Sets and 4 Soft Carry Cases  
USD MSRP (C)  
Substitutions not allowed.

### Astra Plus Modular Booth Kit 1

Item #	Description	1	2-5	6-11	12-24
255531	6.5'H Kit	8345.00	8120.00	7700.00	7390.00
255533	8'H Kit	8670.00	8435.00	7995.00	7680.00

Kit Includes: Hardware, 8 Graphic Panels, 2 - 90° Connector Sets, 4 Soft Carry Cases and 3 Hard Cases with Wheels  
USD MSRP (C)  
Substitutions not allowed.

Production Lead Time: 6 days from final proof approval



### Astra Modular Booth Kit 3

Item #	Description	1	2-5	6-11	12-24
255538	8'H Kit	11910.00	11695.00	10820.00	10620.00

Kit Includes: Hardware, 12 Graphic Panels, Monitor Mount, Double Shelf, 180° Connector Set, Bridge Connector Set and 8 Soft Carry Cases  
USD MSRP (C)  
Substitutions not allowed.

### Astra Plus Modular Booth Kit 3

Item #	Description	1	2-5	6-11	12-24
255539	8'H Kit	14695.00	14395.00	13460.00	13135.00

Kit Includes: Hardware, 12 Graphic Panels, Monitor Mount, Double Shelf, 180° Connector Set, Bridge Connector Set, 8 Soft Carry Cases and 5 Hard Cases with Wheels  
USD MSRP (C)  
Substitutions not allowed.

Production Lead Time: 6 days from final proof approval



### Astra Modular Booth Kit 2

Item #	Description	1	2-5	6-11	12-24
255534	6.5'H Kit	5720.00	5490.00	5260.00	4976.00
255536	8'H Kit	5970.00	5730.00	5490.00	5190.00

Kit Includes: Hardware, 6 Graphic Panels, Monitor Mount and 4 Soft Carry Cases  
USD MSRP (C)  
Substitutions not allowed.

### Astra Plus Modular Booth Kit 2

Item #	Description	1	2-5	6-11	12-24
255535	6.5'H Kit	7330.00	7090.00	6790.00	6495.00
255537	8'H Kit	7575.00	7330.00	7020.00	6710.00

Kit Includes: Hardware, 6 Graphic Panels, Monitor Mount, 4 Soft Carry Cases and 3 Hard Cases with Wheels  
USD MSRP (C)  
Substitutions not allowed.

Production Lead Time: 6 days from final proof approval



### Astra Modular Booth Kit 4

Item #	Description	1	2-5	6-11	12-24
255540	8'H Kit	7425.00	7120.00	6780.00	6475.00

Kit Includes: Hardware, 8 Graphic Panels, Monitor Mount, 90° Connector Set, Bridge Connector Set and 5 Soft Carry Cases  
USD MSRP (C)  
Substitutions not allowed.

### Astra Plus Modular Booth Kit 4

Item #	Description	1	2-5	6-11	12-24
255541	8'H Kit	9185.00	8830.00	8455.00	8060.00

Kit Includes: Hardware, 8 Graphic Panels, Monitor Mount, 90° Connector Set, Bridge Connector Set, 5 Soft Carry Cases and 3 Hard Cases with Wheels  
USD MSRP (C)  
Substitutions not allowed.

Production Lead Time: 6 days from final proof approval



